



# Pearson Assessment for Learning Suite Resource Guide



Pearson



## Meet Trent Workman Senior Vice President

Dear Educators,

As a father of three, I have a passion for the welfare and growth of every young mind. Every student deserves to be recognized, celebrated, and provided pathways to reach their potential. Our mission is to work collaboratively with you to make this happen.

It is with this mission in mind that our team of dedicated experts has developed an innovative personalized learning solution, tailor-made to address the needs, talents, and aspirations of every learner. I am proud to introduce our Pearson Assessment for Learning Suite (PALS). This comprehensive platform engages students and allows them to embark on an exciting personal journey of discovery.

For educators, PALS serves as a trusted partner, providing a wealth of resources, tools, and insights to enable them to better understand and support their students' individual needs. With personalized data-driven feedback and comprehensive analytics, teachers can tailor their instruction to meet each student at their current level, ensuring every child can reach their full potential.

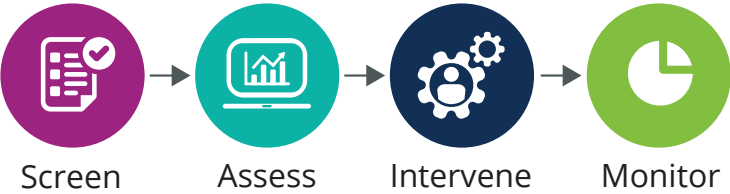
For parents or caregivers, PALS places emphasis on fostering a strong partnership between educators, students, and families. By empowering parents with real-time updates, progress reports, and suggested activities for at-home reinforcement, we aim to create a seamless connection between the classroom and home, enabling parents to actively engage in their child's learning journey.

Join us on this transformative adventure! Together, we can shape a brighter and more promising future for every child.

Warm regards,  
Trent Workman, SVP

# How to use this resource

Explore each section and get to know some of our products!



Each solution toolkit serves as an outline to address that specific challenge using the **SCREEN** ▶ **ASSESS** ▶ **INTERVENE** ▶ **MONITOR** assessment flow. To help you develop a holistic approach to your students’ unique needs, we’ve organized our collections across that same assessment flow. Explore the premier products we’ve highlighted for each topic.

<b>Pearson Assessment for Learning Suite .....</b>	<b>4</b>
<b>Universal Screening &amp; Progress Monitoring.....</b>	<b>6</b>
<b>aimswebPlus.....</b>	<b>7</b>
<b>Navy.....</b>	<b>8</b>
<b>Pearson Review of Progress and Learning (PRoPL) .....</b>	<b>10</b>
<b>College and Career readiness Assessment (CCRA+).....</b>	<b>11</b>
<b>The Pearson Item Bank .....</b>	<b>12</b>
<b>Behavior .....</b>	<b>14</b>
<b>Review360 .....</b>	<b>15</b>
<b>Literacy .....</b>	<b>16</b>
<b>Dyslexia .....</b>	<b>17</b>
<b>Mathematics.....</b>	<b>18</b>
<b>Gifted &amp; Talented .....</b>	<b>19</b>
<b>Cognitive Function &amp; Ability .....</b>	<b>19</b>
<b>Multi-Language Learners.....</b>	<b>20</b>
<b>Early Childhood .....</b>	<b>21</b>
<b>Contact Us.....</b>	<b>22</b>
<b>How to Order .....</b>	<b>23</b>

# Pearson Assessment for Learning Suite

## **Classroom assessments that inform. Student data that empowers.**

The Pearson Assessment for Learning Suite is a comprehensive portfolio of K-12 assessments to support educators, caregivers, and students in improving their educational outcomes. Our suite includes state standards-based measures for interim and formative purposes, skill-based screeners, and progress monitoring tools to support MTSS/RTI programs, and additional screeners for early literacy, dyslexia, and SEL/behavior. Together, as part of a system of assessments, they form powerful insights into the needs of students.





# Explore the Pearson Assessment for Learning Suite

## *Based on Assessment Type*

### **Assessments Aligned to your Academic State's Standards**

- Navvy
- Pearson Formative Item Bank
- PRoPL
- Pearson Secure Item Bank

### **Academic Assessments Based on National Norms and Standards**

- aimswebPlus
- Stanford 10
- Aprenda

### **Domain-Specific Assessments**

- DRA3/EDL2+
- TELL
- WriteToLearn
- Career and College Readiness Assessments (CCRA+)
- BASC-3 BESS

### **Assessments for Spanish-Speaking Learners**

- TELL
- Aprenda
- EDL2+
- PRoPL Spanish for Math



# Universal screening and progress monitoring

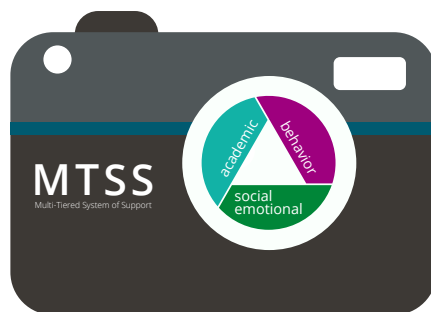


## Building a bridge with MTSS

As we strive to help all students become successful learners, we not only see, but *embrace* the diversity in individual students. Whether you need to identify those who are at risk or need support, pinpoint strengths, and areas of need, implement interventions, or monitor progress, we have the tools to help—no matter how you define your Multi-Tiered System of Support (MTSS) processes.

**With students learning in a variety of settings — virtual, hybrid, and face-to-face instruction — educators are facing an enormous challenge in identifying student needs and providing effective evidence-based interventions.** Research indicates having a comprehensive support structure is effective in student growth and with some additional guidance to help meet your students where they are and support their individual needs.

Recognizing that the MTSS “lens” looks different in every school and district, we are here to help you apply your unique framework (MTSS/RTI/PBIS) to help your students achieve success. Imagine looking at the whole child through the lens of your tiered systems of support for academic, behavior and social wellness... all while making data-driven decisions.



**Did you know we offer a comprehensive tool set to support MTSS?**  
Learn more at **[PearsonAssessments.com/mtss](https://PearsonAssessments.com/mtss)**.

# Need to know where your students are regarding their literacy, mental wellness, academics, and social skills?



**aimswebPlus™** is a tool for teachers and educational teams in MTSS/RTI and special education contexts. aimswebPlus offers nationally normed, skills-based benchmark assessments, and progress monitoring integrated into one application across reading and math domains with additional add-on measures across dyslexia and behavior/social skills. aimswebPlus informs daily instruction and provides growth results to caregivers and district/state audiences in reading and math achievement using curriculum-based assessment and standards-aligned content for students in PreK through Grade 12. Additionally, aimswebPlus links to instructional resources to support growth in reading, writing, and math skills. aimswebPlus uncovers learning gaps quickly, identifies at-risk students, and assesses growth at the individual and group levels.



*aimswebPlus is:*

- nationally normed
- tied to curricular standards
- for grades PreK-12: reading and math PLUS screeners for behavior, social-emotional skills, and dyslexia

The group Tier Transition report provides a comparative snapshot that tracks student progress and movement across fall, winter, and spring periods based on 3 tiers. Tiers (risk level) are generated based on the spring targets set in the account. This report displays a high-level trend and movement between the risk levels within the group. It is useful for determining effectiveness of core and targeted instruction and allocating resources to meet student needs.

# Need classroom assessments that rise to the rigor of your standards?



**Navvy** is a configurable, standards-level progress monitoring assessment system designed to empower personalized learning by providing evidence of standards competency throughout the year and across years with both on-grade and off-grade content.

For teachers, Navvy supports instructional planning with specific, empirically based evidence across reading, math, science, and social studies as well as specifically designed instructional materials connected to each standard.

For students and families, Navvy uses a growth-mindset frame and badge-achievement model to develop engagement and ownership in learning at the student and caregiver level.

Using Navvy, short assessments (eight or fewer questions) are given on-demand throughout the year to diagnose strengths and areas for support on the required state or district standards or learning objectives.

Assess



Intervene



Monitor



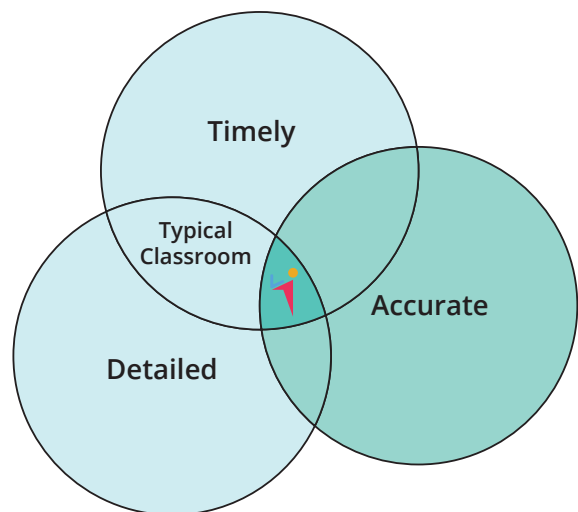


Student	Current Progress	6.EE.1	6.EE.2	6.EE.8	6.G.4	6.NS.1	Course Progress
Neev Ninger	60% (3/5)	✗	✓	✗	✓	✓	10% (3/29)
Piper Pringle	60% (3/5)	✓	✓	✗	✓	✗	10% (3/29)
Trevor Timmons	60% (3/5)	✓	✓	✗	✓	✗	10% (3/29)
Lornezo Laughton	80% (4/5)	✗	✓	✓	✓	✓	14% (4/29)
Sebastian Sevan	100% (5/5)	✓	✓	✓	✓	✓	17% (5/29)
Rebecca Raven	80% (4/5)	✓	✓	✓	✗	✓	14% (4/29)
Olivia O'Neill	80% (4/5)	✓	✓	✓	✓	✗	14% (4/29)
Marco Mandez	100% (5/5)	✓	✓	✓	✓	✓	17% (5/29)
Quinton Quinn	100% (4/4)	✓	✓	✓	✓	🔒	14% (4/29)
Koby Knight	60% (3/5)	✓	✗	✓	✗	✓	10% (3/29)

*Dynamic dashboards pinpoint specific learning in real time for each student*

## Ready to assess differently? Navvy is changing the game for K-12 educators with:

- Short, valid, pre-built assessments to use at a pace and sequence determined by the educator
- Learning empowerment by encouraging students to set smart goals and earn badges through multiple assessment opportunities
- A novel psychometric approach bringing accuracy to classroom assessment



# Get an accurate view of student progress in half the time.

## Pearson Review of Progress and Learning (PRoPL)

Is my students' learning on track to meet our end of year goals? How will they perform on the summative assessment? Where do we need to focus our attention during instruction? Who needs more support in order to succeed? These are all questions educators ask themselves on a regular basis, but pausing instruction for a lengthy assessment isn't always the answer.

**Pearson Review of Progress and Learning (PRoPL)** is a series of three standards-based tests designed to measure student growth during the school year. The tests are intended to be completed in about 30 minutes and provide immediate educator feedback on areas of student strengths and opportunities for learning toward meeting end-of-year goals. With PRoPL, you will experience accurate and actionable results and reduced interim test-taking time!

PRoPL's unique design offers evidence-based results about student performance across ELA and math. Built primarily using on-grade content, PRoPL provides a more accurate picture of student performance on state academic standards. Fitting seamlessly into your curriculum, PRoPL is designed to be an extension of your students' learning, shining a light on the areas that need more instruction before the summative assessment.

The benefits of PRoPL aren't limited to teachers and their students. Administrators can use growth information and projections of summative scores to avoid end-of-year surprises and make decisions such as allocating resources and evaluating curricula.

Assess



Monitor



# Measure and develop students' Portrait of a Graduate skills

## College and Career Readiness Assessment

Your district's **Portrait of a Graduate** identifies the skills, knowledge, attitudes, and attributes every student should have upon graduation. You regularly assess reading, math, social studies, and science to ensure students are meeting benchmarks, but what about critical thinking, problem solving, and written communication?

Just like core subjects, these essential skills can be measured and taught. Council for Aid to Education's (CAE) performance-based College and Career Readiness Assessment (CCRA+) measures common Portrait of a Graduate skills and provides a more complete picture of your students' readiness for the rigors of today's academics and their next steps following graduation.

Student results from CCRA+ can be combined with data from other Pearson assessments to create a more holistic view of the student's strengths and areas of opportunity. CCRA+ can be used for formative, interim, and summative purposes, including establishing a baseline for students, evaluating how their essential skills have progressed, and showcasing their skills upon graduation.

Assess



Monitor



## How does CCRA+ Work?

### Real-World Scenarios

Students are situated in real-world scenarios that require the application of critical thinking, problem solving, and written communication skills.

### Recommend a Solution

Using supplied reference materials, students must organize information, define the problem, address issues, consider and evaluate solutions, and recommend and defend a course of action.

### No Single "Right" Answer

Student scores reflect a range of plausible and effective response strategies – a process that, by design, mimics real-world decision environments.



# The Pearson Item Bank

As the market leader in creating high-quality custom content for high-stakes summative assessments for decades, our experts have used the same rigorous process we follow for assessment design to develop the Pearson Item Bank — now available for licensing.

Our comprehensive bank covers English language arts, writing, math, science, and social studies, as well as performance tasks developed by Council for Aid to Education (CAE) that measure critical thinking, problem solving, and written communication.

Pearson's item bank is designed to be flexible to meet your needs and is therefore comprised of two parts— the Pearson Formative Item Bank and the Pearson Secure Item Bank.

Assess



Monitor





**The Pearson Secure Item Bank** is intended for summative and secure interim assessments that can be customized to meet each state or district's unique assessment blueprints. For the fall of 2023, this bank will include 14,000 items across all four content areas, including writing which can be AI-scored. Performance tasks measuring attributes of a Portrait of a Graduate are also available for interim and summative purposes. Our team of content and psychometric experts can assist in creating the blueprints as well as constructing the assessments to ensure that they meet validity, reliability, and fairness standards.

## Extensive item types

Our bank of reading items is passage-based, using rich authentic texts, as well as multimedia. The passages have been analyzed for text complexity using qualitative and quantitative measures. Science and social studies include scenarios and stimuli that students must interpret, analyze, and evaluate in response to questions.

### Item types include:

- Multiple-choice and multiple-select
- Evidence-based selected response (reading)
- Technology-Enhanced Items (TEI), with inline choice, text entry, drag and drop, equation editor, graphing among the 27 types of TEIs that the bank covers
- Multi-point math items
- Extended written response

# Need to assess student wellness, social skills, and/or behavior?

*Identify, intervene and prevent disruption due to social skills and/or behavior concerns by early identification and intervention with your students.*

Develop safe learning environments for your students through the application of the Screen, Assess, Intervene, and Monitor assessment flow. We are proud to provide the relevant tools that fit within a model that supports prevention, identification, preparedness, response, and recovery.

It's no secret that classroom behavior directly correlates to a student's academic success. As behavior issues are resolved, students' progress improves measurably, as does the climate of their classrooms and schools. The keys to resolving these issues include effective screening, progress monitoring, reporting, and interventions.

## Behavior Toolkit

### Screen

BASC-3 BESS on Q-global, aimswebPlus and Review360  
BASC SWSS on Review360  
SIBS/SEBS on Review360  
SSIS SEL on Q-global, aimswebPlus, and Review360

Screen



### Assess

BASC-3 TRS, PRS, SRP  
BASC-3 PRQ  
BASC-3 SDH  
SSIS SEL Rating Scales

### Intervene

BASC-3 Behavior Intervention Guide  
BASC-3 Behavioral and Emotional Skill-Building Guide  
BASC SWSS Student Skill Builder  
Review360  
SSIS SEH CIP

### Monitor

BASC-3 Flex Monitor  
Review360 Progress Monitoring Plans  
SSIS SEL Progress Monitoring on Q-global or Review360

**Do you have questions about universal screening?**

We're here to help! Contact your Pearson Assessments Consultant.

# Why have a web-based behavior improvement system?



**Review360®** is a platform that supports the implementation of a systematic MTSS process for problem-solving, data-based decision-making, and fair practice. In addition, the platform supports the further development of teachers' professional skills and enhances communication with parents on student progress toward behavioral and social skill growth.

## **Universal Screeners:**

- BASC-3 BESS
- BASC SWSS
- SIBS/SEBS
- SSIS SEL
- Shaywitz DyslexiaScreen

## **Progress Monitoring:**

- Low Incident Progress Plan (LIPP)
- Behavioral Tracking Plan (BTP)
- Behavioral Management Plan (BMP)
- Academic Progress Plan (APP)
- Early Childhood Plan (ECP)
- In-Home Training Plan (IHT)
- Speech-Language Plan (SLP)
- Check-in/Check-out Plan (CI/CO)
- Student Support Team Plan (SST)

## **Professional Development Courses:**

- Autism
- Behavior
- Behavior of Concern
- Intellectual Disabilities
- Intellectual Disabilities Strategies
- Bullying
- Schoolwide
- Classroom Management
- Disciplinary Disproportionality

## **Incident Management, Tracking, and Reporting**

# Work with students with literacy challenges?

Utilizing a universal screening process within your district saves you time in the long run. Collaborating across disciplines and integrating the data is truly a team effort, but one with big rewards!

In literacy work—reading, writing, and spelling—collaboration is key. Here’s how our literacy toolkit can be used universally and/or in targeted ways.



**STEP 1:** K–5 teachers establish a baseline of student performance by administering **aimswwebPlus** to all their students in the fall and add **WriteToLearn** to their existing curriculum. Teams use that data to identify students at risk of not meeting spring targets.

**STEP 2:** After six to eight weeks, all K–3 students are administered the **Shaywitz DyslexiaScreen**. This offers access to the **Aggregate Risk Report, setting aimswwebPlus and Shaywitz DyslexiaScreen data side-by-side.**

**STEP 3:** A team is assembled to review the data. For students at risk on both **aimswwebPlus** and **Shaywitz DyslexiaScreen**, the team knows to immediately begin more intensive interventions or the team can investigate further to determine the best way to address these students’ needs.

Meanwhile, teachers are working through each student’s **DRA3** profile to gain insights into current reading behaviors in order to inform classroom instruction. With data from **WriteToLearn**, interventions can be customized for each student and supported with progress monitoring toward improvement.

## Literacy Toolkit

### Screen

aimswwebPlus  
Aprenda  
DRA3/EDL2+  
Shaywitz DyslexiaScreen

### Intervene

PAL Interventions  
SPELL-Links  
WriteToLearn

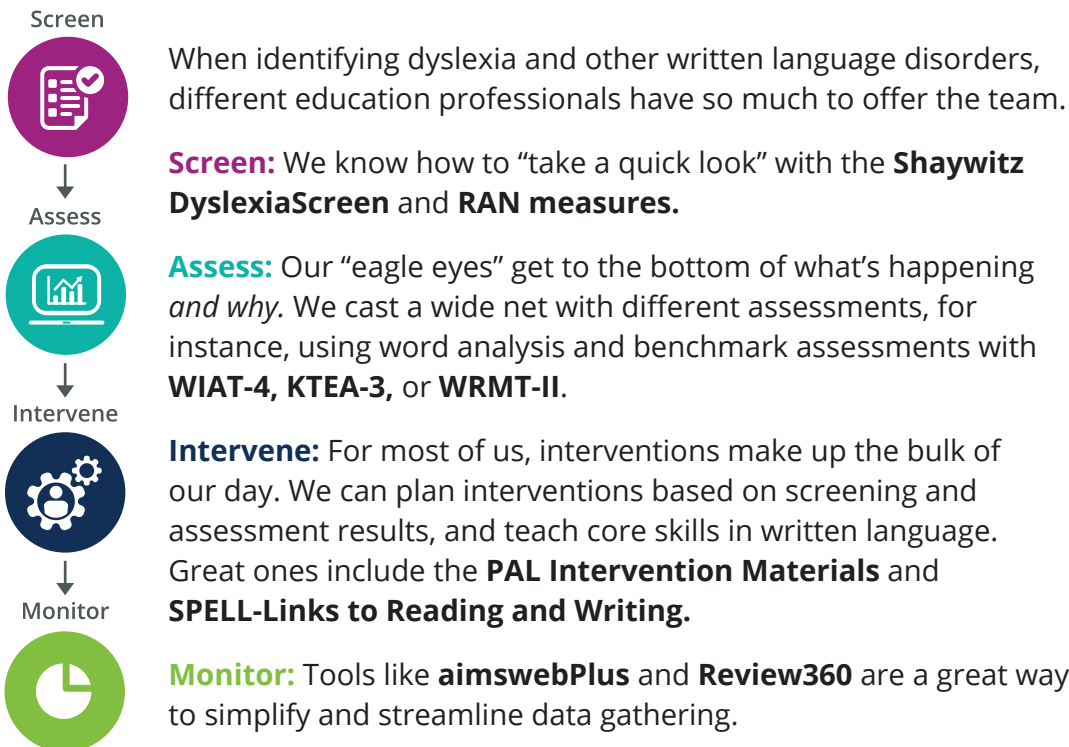
### Monitor

aimswwebPlus



# How do you know if your students are at risk for dyslexia?

## Let's collaborate across disciplines and make measurable change!



### Dyslexia Toolkit

Screen	Assess	Intervene	Monitor
aimswebPlus Dyslexia Probability Calculator RAN measures Shaywitz DyslexiaScreen	WIAT-4 KTEA-3 WRMT-III PAL-II	SPELL-Links	aimswebPlus Review360

See the full dyslexia toolkit at [PearsonAssessments.com/Dyslexia](https://www.pearsonassessments.com/dyslexia).

# Need to assess math acumen?

## The importance of math and the role it plays

Math is everywhere and plays a huge role in school success and into adulthood. Mathematics skills provide an effective way of building mental discipline and encourages logical reasoning and mental rigor. In addition, mathematical knowledge plays a critical role in understanding the contents of other school subjects such as science, social studies, music, and art.

Our newly collected math toolkit includes tools and resources across a continuum of needs we know you have: universal or targeted screening, diagnostic assessment, intervention/instruction, and progress monitoring.

### Mathematics Toolkit

#### Screen

aimswebPlus  
Aprendra

#### Intervene

Building Math  
Success Workbooks

#### Monitor

aimswebPlus



# How do you ensure your gifted & talented students don't fall through the cracks?

Obvious musical gifts, advanced reasoning, exceptional drawing skills, a remarkable proclivity for solving difficult mathematical equations — all clear signs of a child who is gifted and/or talented. How do we identify giftedness and talent in children who have an expressive language delay, speak another language, or suffer from test anxiety?

## Testing for giftedness and talent isn't one-size-fits-all.

With the right tools in place, students have an opportunity to be discovered and placed into a program that will give them a chance to shine! Casting a wider net over your student body can give them that opportunity for discovery and set them on the path to greatness that they are destined for.

### Gifted and Talented Tools

OLSAT8

NNAT3

Assess



Explore all our  
**gifted and talented  
resources.**

# Need reliable information on your students' cognitive abilities?

## Our tools can help determine eligibility!

Assessing cognitive function and psychological processing is essential to identifying potential learning and intellectual disabilities. When you're determining eligibility for Special Education services, selecting and administering *valid and reliable assessments* is crucial.

### Cognitive Function and Ability Tools

OLSAT8

NNAT3

Assess



# How do we help multi-language learners navigate English in the US?

By 2025, one in four public school students will be a multi-language learner.\* Educators across the country are rising to the challenge of improving language development in their complex and rapidly growing student populations.

Fortunately, next-generation programs allow states, districts, and schools to develop comprehensive ELL/ESL systems that include instruction, assessment, and professional development for teachers.

## Accelerating Success for English Language Learners

With the current size and anticipated growth of the ELL population, school districts have much at stake when it comes to ensuring their success. Developed in response to the specific needs of educators working with ELL students, our tools for multi-language learners leverage these students' talents and provide a cutting-edge solution for assessing progress in a fun and engaging environment.

### Multi-Language Learners Toolkit

Screen	Assess	Intervene	Monitor
aimswebPlus Spanish	aimswebPlus Spanish	EDL2+	aimswebPlus Spanish
AprendA	EDL2+	WriteToLearn	EDL2+
EDL2+	TELL		TELL
TELL	WriteToLearn		WriteToLearn

\* National Education Association, 2020



# Work with infants and early childhood?

From observational assessment of early developmental skills and social behavior growth to agile screening that helps identify children who may need special education services



## Birth through third grade

*Help parents become more keen observers and stay informed of developmental milestones.*

**The Ounce Scale™** provides a structure to help parents observe their child's behaviors. It provides a measure of personal connections, feelings about self, their relationships with other children, understanding and communicating, exploration, problem-solving, movement, and coordination to help you better assess each young child's development.

For use with children preschool through Grade 3, **The Work Sampling System®** can help you better communicate about each child's progress and refine instruction to meet children's individual needs. As one of the highest validated performance systems available, it presents clear criteria for collecting information on the child's work and compares it to age- and grade-specific standards so you can systematically document their skills, knowledge, behavior, and academic accomplishments.

### Early Childhood Tools

The Ounce Scale  
The Work Sampling System

Assess



Monitor



# Subscriptions, licensing information, and renewal



## Meet your Renewals Specialists!

Have questions about your aimswebPlus, DRA3, EDL2+, Review360, TELL or WriteToLearn renewal? We're here to help guide you. Send us an email at [CAPrenewals@pearson.com](mailto:CAPrenewals@pearson.com) or call 1-800-328-5999.



**Alex Davila**  
*Licensing Renewals Specialist*  
CT, MA, ME, MI, NH, OH, VT



**Deitra Bell**  
*Licensing Renewals Specialist*  
AK, AZ, CA, HI, ID, MT, NM, NV, OR, WA



**Aleela Warren**  
*Licensing Renewals Specialist*  
IN, DC, DE, KS, KY, MD, NJ, NY, SD, ND



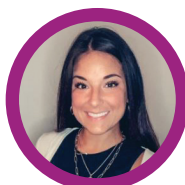
**Paola Di Bella Gil**  
*Licensing Renewals Specialist*  
AL, AR, GA, FL, LA, MS, OK, TN, TX, UT



**Gina Greco**  
*Licensing Renewals Specialist*  
CO, IA, MN, NE, WI, WY



**Staisha Federick**  
*Licensing Renewals Specialist*  
IL, MO



**Michelle Kistler**  
*Licensing Renewals Specialist*  
NC, PA, SC, VA, WV



# Easy ways to order

## How to order



### Web

The *quickest way to order* is via our website at **PearsonAssessments.com**.



### Phone

**+1 (800) 328-5999**



### Fax

Prior to faxing, review the fax order checklist at: **PearsonAssessments.com/Fax**  
**+1 (800) 232-1223**



### Purchase orders

Customers purchasing on behalf of an organization with an established account may utilize purchase orders in the website checkout as well as by web form or fax. Learn more: **PearsonAssessments.com/PO**



### Quotes

Create your own quote on our website. Visit **PearsonAssessments.com/Quote** to get started.



### Questions about ordering?

We've got you covered. Visit **PearsonAssessments.com/Ordering** for helpful hints on:

Account creation • Qualifications •  
Manual ordering • Purchase orders •  
Mail-in scoring

## Order Status

Check the status of your order at **PearsonAssessments.com/Orderstatus**.

## Invoices

Find an invoice at **PearsonAssessments.com/Invoice**.

## Additional support

Just as there are many ways to order, there are different support options available at **PearsonAssessments.com/Contact**.

- Read online help articles
- Call Customer Support:  
**+1 (800) 328-5999**

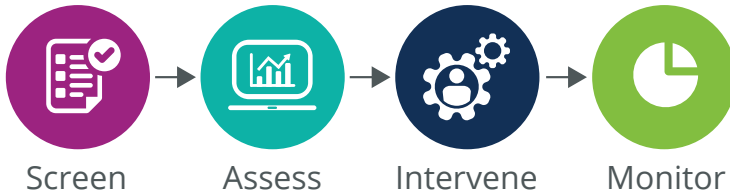
## Product platform login

For customers who have purchased Pearson products that have an online platform for assessment administration/scoring, you can find links to all platform login pages at **PearsonAssessments.com/Product-logins**.

## Things to remember!

Jot down your **customer account number** for future reference while ordering. You can find this listed on past order confirmations or invoices.





## Take inventory: The whole child lens

To help meet your students where they are, what products do you use to screen, assess, intervene/support, and monitor their progress?

### For academics:

Screening:

Assess:

Intervene and support:

Monitor:

### For behavior and social wellness:

Screening:

Assess:

Intervene and support:

Monitor:

# Thank you for all that you do!

“Thank you” can’t quite convey the immense gratitude we have for your dedication day in and day out to nurturing and inspiring your students. As stewards of the unique learning journey of each child that steps into your classrooms, you ignite that first spark in Pre-K when children enter the classroom for the first time, excited to learn and ready to make new friends. In elementary school, you unlock the joy that is reading and getting lost in a great story, the thrill of learning about the solar system, and the feeling of accomplishment after completing a particularly challenging word problem. In middle and high school, when students begin to chart a path toward college and/or career, you are a guiding presence and champion, encouraging them to explore and pursue what interests and drives them.

Mentor. Role model. Advocate. Teacher. We’re here to support you in the many ways that you support students.

## Keep in touch with us on our social channels:



/PearsonAssessmentsUS



Pearson-Assessments-US



@PearsonAssessmentsUS



Pearsonassessmentsus

